

# State of Wyoming Corner Record

(In compliance with the CORNER PERPETUATION AND FILING ACT, Wyoming Statutes, 1997, Section 33-29-140 et. seq., and the Rules and Regulations of the Board of Registration for Professional Engineers and Professional Land Surveyors)

Reverse side of this form may be used if more space is needed.

Record of original survey and citation of source of historical information (if corner is lost or obliterated). Description of corner monumentation evidence found and/or monument and accessories established to perpetuate the location of this corner. Sketch of relative location of monument, accessories, and reference points with course and distance to adjacent corner(s) (if determined in this survey). Method and rationale for reestablishment of lost or obliterated corner.

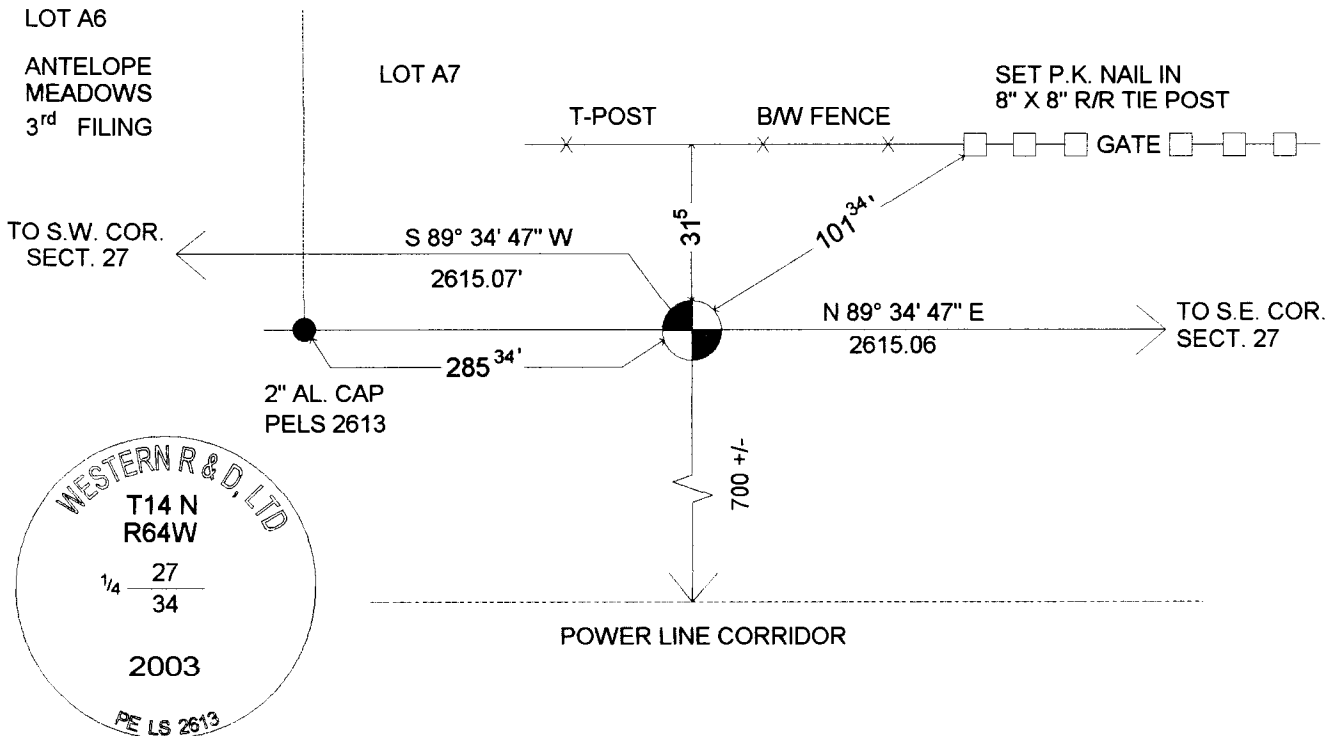
RECORD: SET A RED SANDSTONE 16" X 8" X 5"  
FOR 1/4 CORNER

MONUMENT FOUND: NOTHING FOUND

MONUMENT SET: SET 2 1/2" ALUMINUM CAP ON  
5/8" X 24" REBAR 0'2" ABOVE  
SURFACE OF GROUND STAMPED  
AS NOTED.

REFERENCES: AS NOTED

NOTE: CORNER WAS RESET BY SINGLE PROPORTION



Date of Field Work: Oct 2003 Office Reference: T14 N R64 W - 440 200

### CROSS INDEX DIAGRAM

|   |    |    |    |    |    |    |   |   |    |    |    |    |    |    |    |    |    |    |    |    |    |    |    |    |    |   |   |
|---|----|----|----|----|----|----|---|---|----|----|----|----|----|----|----|----|----|----|----|----|----|----|----|----|----|---|---|
| 1 | 2  | 3  | 4  | 5  | 6  | 7  | 8 | 9 | 10 | 11 | 12 | 13 | 14 | 15 | 16 | 17 | 18 | 19 | 20 | 21 | 22 | 23 | 24 | 25 | 26 |   |   |
| A |    |    |    |    |    |    |   |   |    |    |    |    |    |    |    |    |    |    |    |    |    |    |    |    |    | A |   |
| B |    |    |    |    |    |    |   |   |    |    |    |    |    |    |    |    |    |    |    |    |    |    |    |    |    | B |   |
| C | 6  | 5  | 4  | 3  | 2  | 1  |   |   |    |    |    |    |    |    |    |    |    |    |    |    |    |    |    |    |    | C |   |
| D |    |    |    |    |    |    |   |   |    |    |    |    |    |    |    |    |    |    |    |    |    |    |    |    |    | D |   |
| E |    |    |    |    |    |    |   |   |    |    |    |    |    |    |    |    |    |    |    |    |    |    |    |    |    | E |   |
| F |    |    |    |    |    |    |   |   |    |    |    |    |    |    |    |    |    |    |    |    |    |    |    |    |    | F |   |
| G | 7  | 8  | 9  | 10 | 11 | 12 |   |   |    |    |    |    |    |    |    |    |    |    |    |    |    |    |    |    |    | G |   |
| H |    |    |    |    |    |    |   |   |    |    |    |    |    |    |    |    |    |    |    |    |    |    |    |    |    | H |   |
| J |    |    |    |    |    |    |   |   |    |    |    |    |    |    |    |    |    |    |    |    |    |    |    |    |    | J |   |
| K |    |    |    |    |    |    |   |   |    |    |    |    |    |    |    |    |    |    |    |    |    |    |    |    |    | K |   |
| L | 18 | 17 | 16 | 15 | 14 | 13 |   |   |    |    |    |    |    |    |    |    |    |    |    |    |    |    |    |    |    | L |   |
| M |    |    |    |    |    |    |   |   |    |    |    |    |    |    |    |    |    |    |    |    |    |    |    |    |    | M |   |
| N |    |    |    |    |    |    |   |   |    |    |    |    |    |    |    |    |    |    |    |    |    |    |    |    |    | N |   |
| O |    |    |    |    |    |    |   |   |    |    |    |    |    |    |    |    |    |    |    |    |    |    |    |    |    | O |   |
| P | 19 | 20 | 21 | 22 | 23 | 24 |   |   |    |    |    |    |    |    |    |    |    |    |    |    |    |    |    |    |    | P |   |
| Q |    |    |    |    |    |    |   |   |    |    |    |    |    |    |    |    |    |    |    |    |    |    |    |    |    | Q |   |
| R |    |    |    |    |    |    |   |   |    |    |    |    |    |    |    |    |    |    |    |    |    |    |    |    |    | R |   |
| S |    |    |    |    |    |    |   |   |    |    |    |    |    |    |    |    |    |    |    |    |    |    |    |    |    | S |   |
| T | 30 | 29 | 28 | 27 | 26 | 25 |   |   |    |    |    |    |    |    |    |    |    |    |    |    |    |    |    |    |    | T |   |
| U |    |    |    |    |    |    |   |   |    |    |    |    |    |    |    |    |    |    |    |    |    |    |    |    |    | U |   |
| V |    |    |    |    |    |    |   |   |    |    |    |    |    |    |    |    |    |    |    |    |    |    |    |    |    | V |   |
| W |    |    |    |    |    |    |   |   |    |    |    |    |    |    |    |    |    |    |    |    |    |    |    |    |    | W |   |
| X | 31 | 32 | 33 | 34 | 35 | 36 |   |   |    |    |    |    |    |    |    |    |    |    |    |    |    |    |    |    |    | X |   |
| Y |    |    |    |    |    |    |   |   |    |    |    |    |    |    |    |    |    |    |    |    |    |    |    |    |    |   | Y |
| Z |    |    |    |    |    |    |   |   |    |    |    |    |    |    |    |    |    |    |    |    |    |    |    |    |    |   | Z |

Firm/Agency, Address

Roger H. Krum, PE & PLS2613  
Western R & D, Ltd.  
5908 Yellowstone Rd Suite B  
Cheyenne, Wyoming 82001

Telephone Number: 307 632 5656

This corner record was prepared by me or under my direction and supervision.  
SEAL & SIGNATURE



RECORDED 5/24/2005 AT 1:48 PM REC# 417611 K# 1882 PG# 1244  
DEBRA K. LATHROP, CLERK OF LARAMIE COUNTY, WY PAGE 1 OF 1

Corner Name: 1/4 CORNER SECTION 27-34

Section: 27-34 T14 N R64 W; 6th P.M. Cross-Index No.: V-15